

TRAIL OF THE LAKES MUNICIPAL UTILITY DISTRICT

PARKS, TRAILS AND RECREATIONAL FACILITIES

RULES AND REGULATIONS

ADOPTED: MARCH 25, 2019

**TRAIL OF THE LAKES MUNICIPAL UTILITY DISTRICT
PARKS, TRAILS AND RECREATIONAL FACILITIES
RULES AND REGULATIONS**

TABLE OF CONTENTS

	<u>PAGE</u>
RECITALS	2
DEFINITIONS	2
GENERAL PROVISIONS	3
RULES FOR ALL RECREATIONAL FACILITIES	3
GUEST POLICIES	5
RULES FOR DOG PARK	5

EXHIBITS

EXHIBIT A – MAP OF DISTRICT'S RECREATIONAL AMENITIES

**TRAIL OF THE LAKES MUNICIPAL UTILITY DISTRICT
PARKS, TRAILS AND RECREATIONAL FACILITIES
RULES AND REGULATIONS**

WHEREAS, Trail of the Lakes Municipal Utility District, Harris County, Texas (the "District"), is a body politic and corporate and a governmental agency of the State of Texas, operating under and governed by the provisions of Chapters 49 and 54, Texas Water Code, as amended, and Section 59 of Article XVI of the Texas Constitution; and

WHEREAS, the Board of Directors of the District (the "Board") has constructed recreational amenities within the boundaries of the District as depicted on **Exhibit "A"**; and

WHEREAS, pursuant to Texas Water Code, Section 49.465, the District Board has determined the size and location of the District recreational amenities was established in consideration of City of Houston and Harris County recreational facilities, whether existing or proposed, that serve or will serve the area in which the District is located; and

WHEREAS, the Board of the District seeks to adopt these Rules and Regulations for the District's recreational amenities, which include parks, trails and other recreational facilities; and

WHEREAS, on March 25, 2019, the Board determined that it was necessary and proper to pass these Rules and Regulations to provide a safe and family friendly environment for all District residents and guests during their use of the District's recreational amenities.

IT IS, THEREFORE, ORDERED BY THE BOARD OF DIRECTORS OF TRAIL OF THE LAKES MUNICIPAL UTILITY DISTRICT THAT:

DEFINITIONS

The following are terms used through these Rules and Regulations:

BOARD: The Board of Directors of the District.

DISTRICT: Trail of the Lakes Municipal Utility District.

DISTRICT REPRESENTATIVE: Individual(s) designated by the Board to represent the District in administering the Rules and Regulations contained herein.

FACILITIES: The playground, trail, fitness stations, fitness equipment, community park or dog park improvements made to the Recreational Amenities available for use by Residents and Guests.

FAMILY UNIT: Each single-family household or multi-family apartment household is considered a Family Unit.

GUEST: A non-resident of the District.

RECREATIONAL AMENITY OR AMENITIES: Shall mean the following recreational amenities: 1) Clayton's Park Detention Basin Trail; 2) Atascocita Forest Detention Basin Trail; 3) Trail A; 4) Trail Connection along Woodland Hills Drive; 5) Lago Forest Drive Playground; 6) Fitness Parks One and Two; and 7) Dog Park.

RESIDENT: A member of a Family Unit who resides within the boundaries of the District.

RULES AND REGULATIONS: As used herein means this Parks, Trails and Recreational Facilities Rules and Regulations.

GENERAL PROVISIONS

The District does not discriminate against any user of the Facilities on the basis of age, sex, race, national origin, ancestry, creed, religion, marital status or handicap.

The Facilities are owned and operated by the District.

The Facilities are for the use and enjoyment of the Residents and their accompanied Guests. Facilities are open to all District Residents and their Guests at no charge. The District reserves the right to refuse entry to or terminate any person's use the Facilities for conduct or behavior not conforming to these Rules and Regulations.

The District allows the use of the Facilities for informal events and other group and individual functions as prescribed herein on a first come, first served basis. The District does not allow the use of the Facilities for the for-profit sale of goods or services at any time.

From time to time, the District may host events for all Residents of the District at the Facilities ("District Events"). The District reserves the right to allow uses outside the specific rules cited herein when the Board determines it is in the best interest of the District.

The Facilities are not to be used for any purpose that violates any federal, State or local law, ordinance or regulation, or any laws to which the District is subject or the District's own rules and policies.

RULES FOR ALL RECREATIONAL FACILITIES

1. Hours of Operation of the Recreational Amenities are daylight hours, seven (7) days a week.
2. No tobacco use in the Facilities, including the areas immediately surrounding each of these Facilities, except as otherwise designated.
3. No fireworks or pyrotechnics.
4. No person shall possess or carry a firearm within the Facilities unless the person is licensed to possess and carry a handgun under Government Code, Chapter 411, Subchapter H, and is in possession of and/or carrying the handgun in compliance with all applicable laws.
5. No person shall hunt any animal or shoot, fire or discharge any pistol, shotgun or rifle, other firearm or archery arrow in, on, along or across any of the Recreational Amenities.

6. No excessively loud music at any time at the Recreational Amenities, nor any other use of the Facilities that might unduly affect or disturb the residences that neighbor the Facilities.
7. No person shall throw or otherwise dispose of any trash or litter in any Facility except in the containers provided therefore.
8. All refuse must be disposed of in the proper receptacles.
9. No unauthorized signs.
10. No profanity or otherwise inappropriate behavior.
11. No hitting golf balls.
12. Where allowed, pets must be on a leash or restrained at all times at all Facilities not designated as a "pet run" or "dog park" area. All pet owners are responsible for any damage caused by their pets and for cleaning up after their pets.
13. No person shall play any game of baseball, football, golf, cricket, lacrosse, polo, soccer, kickball, hockey or other game of like character in the Facilities except at the places designated.
14. No person shall dump any debris, junk, garbage, waste, fill or other material onto the Facilities or the adjacent water areas.
15. No person shall gamble, or conduct or operate any bingo, lottery or other games of chance within the Recreational Amenities.
16. No person shall bring into or upon the Recreational Amenities, or have in their possession while therein or thereupon any glass receptacles including but not limited to glass bottles, glass jars, drinking glasses or other glass containers of any kind. The prohibition of glass containers shall not apply to baby bottles, baby food jars, glass lined vacuum bottles and glass lined picnic beverage coolers.
17. No person shall build or cause to be built any fires within the Recreational Amenities.
18. No person shall drive or propel any vehicle over or through the Recreational Amenities except along or upon Recreational Amenities drives, parkways or boulevards.
19. No person shall ride or drive any horse or other animal over or through the Recreational Amenities.
20. No person shall tease, annoy, molest, catch or throw any stone, object or missile of any kind at, or strike with any stick, object or weapon, any person, animal, fowl or fish in the Recreational Amenities.

21. No person shall walk, stand or sit on or in any border, flower bed, monument, vase, fountain, railing or fence in the Recreational Amenities unless it is clearly designed or designated for such purpose.
22. No person shall remove or cut any flower, shrub, vine, tree or other plant in the Recreational Amenities without the written permission of a District Representative.
23. No person shall fish in the Recreational Amenities containing water.
24. No alcohol is allowed at any Recreational Amenity.

GUEST POLICIES

1. The purpose of these policies is to prevent a Guest from misusing the Facilities.
2. Guests are subject to all rules, policies and guidelines provided in these Rules and Regulations.
3. It is requested that all Guests do not interfere with Residents use of the Recreational Amenities.

RULES FOR DOG PARK

1. Hours of Operation are daylight hours, seven (7) days a week.
2. All Rules for all Recreational Amenities also apply to the Dog Park
3. Owners are liable for damage or injury inflicted by their dog(s). This means owners are legally and financially responsible for their dog's behavior. The District has no liability or responsibility for injuries or loss in the dog park.
4. Limit of two (2) dogs per person per visit.
5. Dogs must be properly licensed and vaccinated with registration and rabies tags displayed on each dog's collar.
6. Dogs must be leashed before entering and upon leaving the dog park as well as in the transition corridor but must be off-leash within the confines of the dog park. Owners must have a visible leash for each dog at all times.
7. Owners must have visible pet waste disposal materials at all times and must collect and properly dispose of dog fecal matter in a garbage receptacle.
8. Owners must be in verbal and sight control of their dog(s) at all times and prevent aggressive behavior, biting, fighting and aggressive barking. Dog(s) shall never be left unattended.
9. Dogs with a known history of dangerous or aggressive behavior are prohibited. Dog(s) found to be aggressive must be immediately escorted out of the Dog Park by its owner.

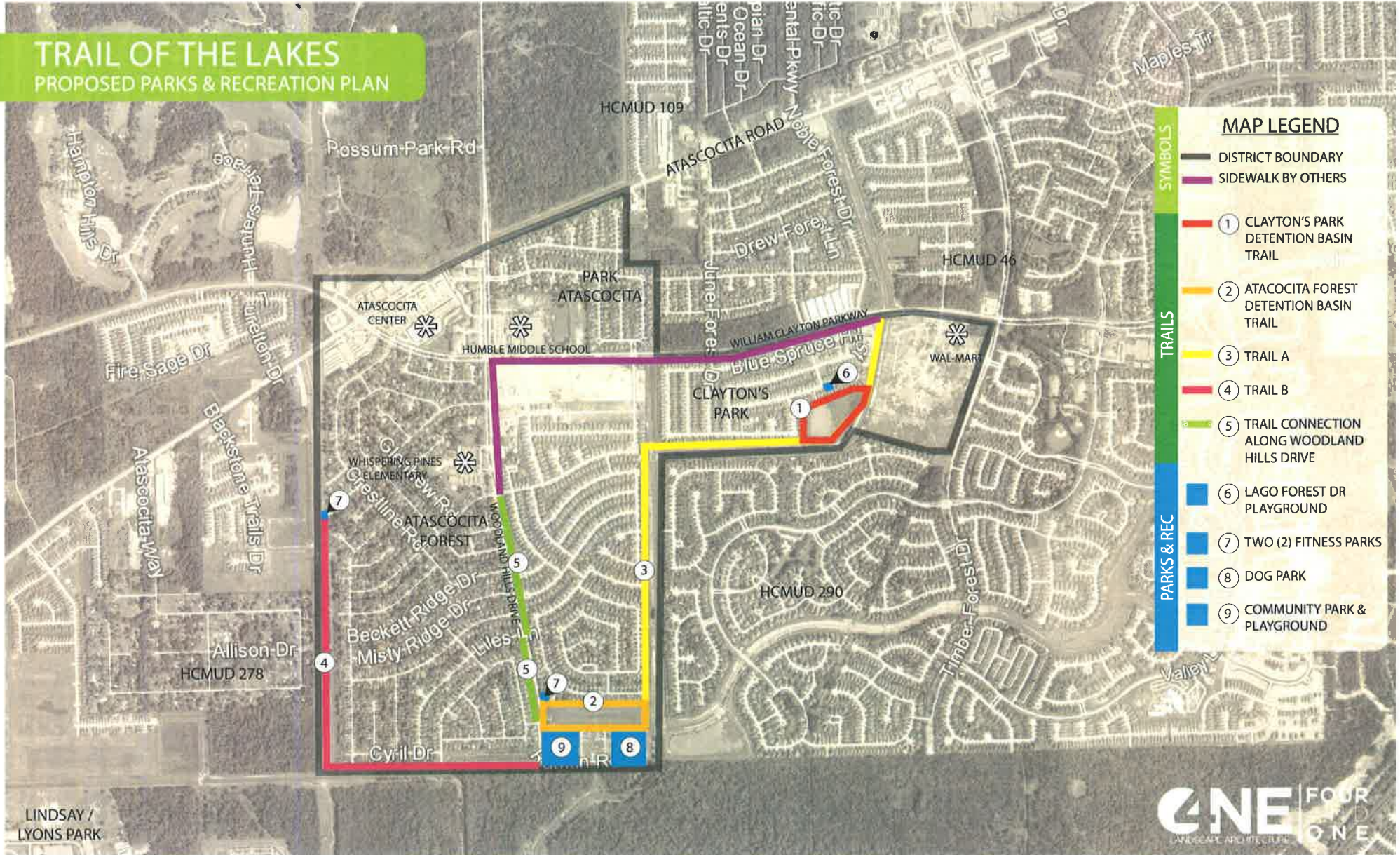
10. No puppies under four (4) months of age are allowed in the Dog Park.
11. No female dogs in heat are allowed in the Dog Park.
12. No children age 12 or younger are allowed in the Dog Park. Children ages 13 through 17 must be accompanied by an adult. Permitted children must be supervised by the adult and behave appropriately: No running, shouting, chasing dogs, or petting other people's dogs without the owner's permission.
13. No food, for dogs or humans, is allowed in the Dog Park.
14. No other types of animals are permitted in the Dog Park.

EXHIBIT A

MAP OF DISTRICT'S RECREATIONAL AMENITIES

TRAIL OF THE LAKES

PROPOSED PARKS & RECREATION PLAN



MAP LEGEND

- | SYMBOLS | |
|-------------|---|
| | DISTRICT BOUNDARY |
| | SIDEWALK BY OTHERS |
| TRAILS | |
| | 1 CLAYTON'S PARK DETENTION BASIN TRAIL |
| | 2 ATASCOCITA FOREST DETENTION BASIN TRAIL |
| | 3 TRAIL A |
| | 4 TRAIL B |
| | 5 TRAIL CONNECTION ALONG WOODLAND HILLS DRIVE |
| PARKS & REC | |
| | 6 LAGO FOREST DR PLAYGROUND |
| | 7 TWO (2) FITNESS PARKS |
| | 8 DOG PARK |
| | 9 COMMUNITY PARK & PLAYGROUND |

LINDSAY / LYONS PARK